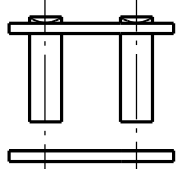
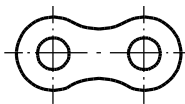
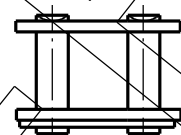
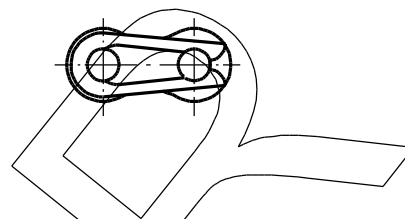


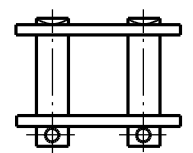
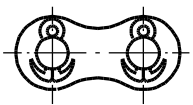
Innenglied



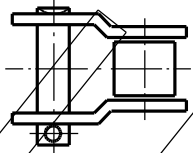
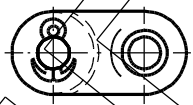
= Außenglied



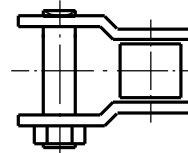
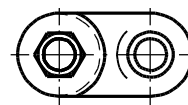
Verbindungsglied mit Feder



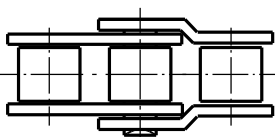
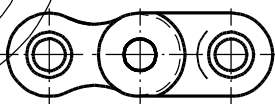
Verbindungsglied mit Splinten



Gekröpftes Glied mit Splint



Gekröpftes Glied mit Mutter



Gekröpftes Doppelglied



ROEDER KETTENTECHNIK

Allgemeintoleranzen
DIN ISO 2768 T1 m
DIN ISO 2768 T2 K

Maßstab 1:1

(Gewicht)

Datei: VSG_SIMPLEX.dcd

Datum

Name

Bearb. 06.09.04

Heinrichs

Gepr.

Norm

Verschlußglieder Simplex

Zeich.-nr.: _____

Blatt

Blätter

Zust.	Änderung	Datum	Name	Urspr.

Ers. für:

Ers. durch:

I:\Zeichnungen_Documente_Kunde\Vorlagen\03 Baugruppen\VSG_SIMPLEX.dcd